

Management of Asbestos-Containing Materials in Buildings

A Guide for Project Managers

Step 1

OESO Asbestos Planner must be notified when:

- A renovation/demolition project is initiated.
- A routine maintenance may result in disturbance of asbestos-containing material (ACM)
- An emergency has resulted in the disturbance of ACM or will require ACM to be abated in order to manage the emergency.

Step 2

OESO Asbestos Planner will:

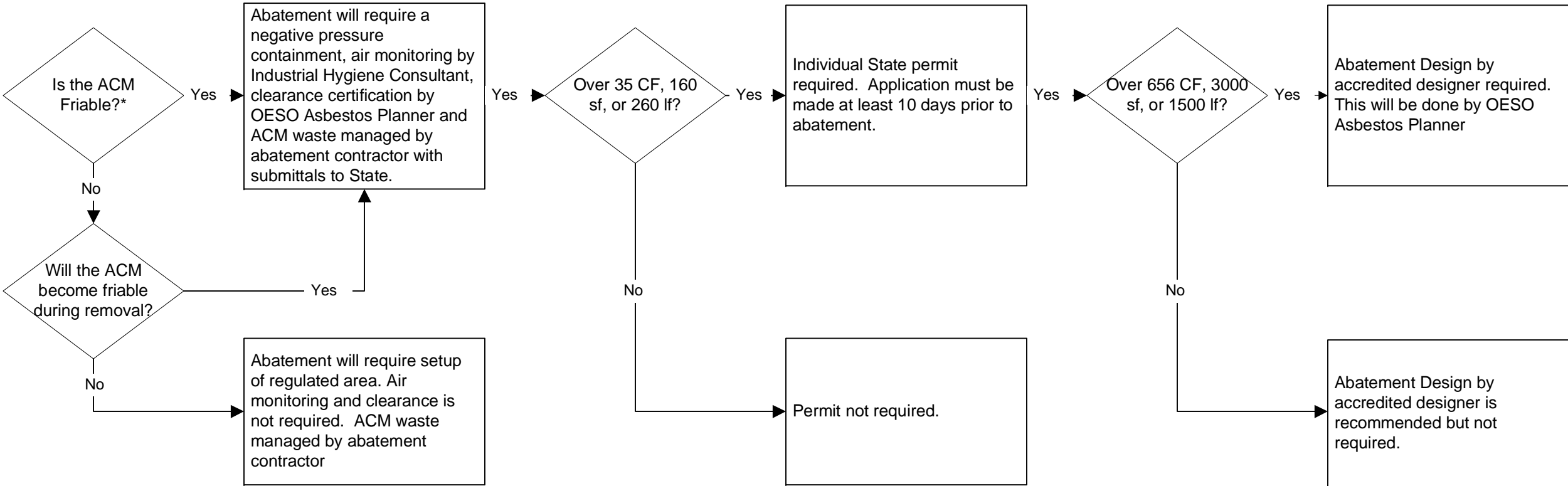
- Review the scope of project,
- Determine if existing survey data is available,
- Arrange for additional surveying if necessary,
- Prepare a report with drawings indicating the types, amounts, and condition of any ACM

Step 3

When asbestos is found, the usual response is to abate it. There are circumstances where this may not be necessary.

The OESO Abatement Planner will meet with the requester to discuss the specifics and, if abatement is necessary, determine the method of abatement.

The flow chart below shows the abatement process



A friable ACM is a material containing more than 1% asbestos that can be crumbled, pulverized or reduced to powder by hand pressure when it is dry. A non-friable ACM is a material containing more than 1% asbestos that cannot be crumbled, pulverized or reduced to powder by hand pressure when it is dry